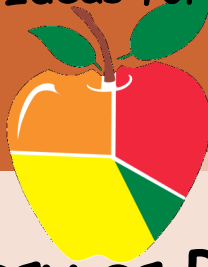


Practical Ideas for Educators



## Easy as PIE! Common Core

# Connection-Mathematics

Utica, MI • December 8, 2018



**COMMON CORE**  
STATE STANDARDS

Grades K-5

**Design classroom activities that incorporate the common core state standards.**

This 1-day seminar will provide participants with engaging activities and strategies that will integrate the common core state standards for mathematics.

- Learn how the Common Core set grade-specific standards and learning outcomes.
- Provide clear signposts along the way to the goal of college and career readiness for all students.

*Earn up to 3 graduate credits*



### **UNIVERSITY SEMESTER CREDIT OPTION:**

Participants can earn up to 3 graduate level credits by completing a follow-up activity for just \$62 per credit hour. If you have additional questions, please feel free to contact us at (734) 776-6581.

**[www.easy-aspie.com](http://www.easy-aspie.com)**

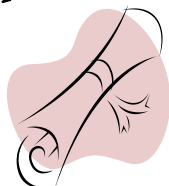
# Practical Ideas for Educators



P.O. Box 2186  
Garden City, MI 48136

## ATTENTION: Educators

Earn up to 3 graduate credits



### Common Core Connection- Mathematics

Grades K-5

**COST:** \$179 per person  
(includes all workshop materials)  
Graduate credit available at an additional cost .

**DATE:** Saturday, December 8, 2018

**TIMES**

Check-In 8:30 a.m.

Workshop 9 a.m.—3 p.m.

**LOCATION**

Hyatt Place Utica  
45400 Park Avenue  
Utica, MI 48315

**CONTACT INFORMATION**

Contact Us: (734) 776-6581

Email: [inquiries@easy-aspie.com](mailto:inquiries@easy-aspie.com)

#### HOW TO REGISTER FOR THE WORKSHOP:

- ◆ Register online at [www.easy-aspie.com](http://www.easy-aspie.com) with a credit card.
- ◆ Register by mail with a cashier's check or money order payable to: Practical Ideas for Educators  
**All cashier's checks must be received at least one (1) week prior to the workshop.**
- ◆ Mail this registration form and school check to P.O. Box 2186 Garden City, MI 48136

#### REGISTRATION FORM:

Name: \_\_\_\_\_

Address: \_\_\_\_\_

City: \_\_\_\_\_ Phone: \_\_\_\_\_

School District: \_\_\_\_\_ Grade Level: \_\_\_\_\_

Email Address: \_\_\_\_\_

Type of Credit Card: Visa    MasterCard    American Express

Credit Card Number: \_\_\_\_\_

Expiration Date: \_\_\_\_\_ Card Verification Code: \_\_\_\_\_

# [www.easy-aspie.com](http://www.easy-aspie.com)