

**Easy as PIE!**

**Common Core**

**Connections-Mathematics**



**Grades K-5**

**Design classroom activities that incorporate the common core state standards.**

This 1-day seminar will provide participants with engaging activities and strategies that will integrate the common core state standards for mathematics.

- Learn how to unpack grade-specific standards
- Provide clear signposts along the way to the goal of college and career readiness for all students.

*Earn up to 3 graduate credits*



**UNIVERSITY SEMESTER CREDIT OPTION:**

Participants can earn up to 3 graduate level credits by completing a follow-up activity for just \$62 per credit hour. If you have additional questions, please feel free to contact us at (734) 776-6581

**[www.easy-aspie.com](http://www.easy-aspie.com)**

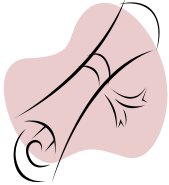
# Practical Ideas for Educators



P.O. Box 2186  
Garden City, MI 48136

## ATTENTION: TEACHERS Professional Development Opportunity

Earn up to 3 graduate credits



## Common Core Connection- Mathematics

### Grades K-5

**COST:** \$179 per person  
(includes all materials)  
Graduate credit available at an additional cost.  
**DATE:** Saturday, June 1, 2019

**LOCATION**  
Marriott Livonia  
17100 N. Laurel Park Drive  
Livonia, MI 48152

**TIMES**  
Check-In 8:30 a.m.  
Workshop 9 a.m.—3 p.m.

**CONTACT INFORMATION**  
Contact Us: (734) 776-6581  
Email: [easyasp-i-e@sbcglobal.net](mailto:easyasp-i-e@sbcglobal.net)

### HOW TO REGISTER FOR THE WORKSHOP:

- ◆ Register online at [www.easy-aspie.com](http://www.easy-aspie.com) with a credit card.
- ◆ Register by mail with a check or money order made payable to: Practical Ideas for Educators  
**All school checks must be received at least one (1) week prior to the workshop.**
- ◆ Mail this registration form and check to P.O. Box 2186 Garden City, MI 48136
- ◆ Complete this form at an onsite workshop and submit to the consultant.

### REGISTRATION FORM:

Name: \_\_\_\_\_  
Address: \_\_\_\_\_  
City: \_\_\_\_\_ Phone: \_\_\_\_\_  
School District: \_\_\_\_\_ Grade Level: \_\_\_\_\_  
Email Address: \_\_\_\_\_  
Type of Credit Card: Visa    MasterCard    American Express  
Credit Card Number: \_\_\_\_\_  
Expiration Date: \_\_\_\_\_ Card Verification Code: \_\_\_\_\_  
Registration Amount: \_\_\_\_\_

# [www.easy-aspie.com](http://www.easy-aspie.com)